



Walker Galleries

18 Nov - 2 December 2023

Limestone and Moor

Katharine Holmes



WATERMARK
GALLERY

18 Nov – 2 December 2023

Limestone and Moor

Katharine Holmes

We do hope you can join us to meet Katharine Holmes at the private view of this exhibition on **Friday 17th November, 6-8pm.**

Our venue for this exhibition is Watermark Gallery, 8 Royal Parade, Harrogate, HG1 2SZ. The gallery is opposite The Royal Pump Room Museum.

“My work is a deep exploration of the relationship between my surroundings, my creative process, and the media I employ. It’s a dialogue between the external world, and my internal, artistic vision, a reflection of the ever changing weather and light and a testament to the passage of time in the landscape.”

Front cover:

High Summer in Littondale

See page 17

Opposite::

**Summer above Halton Gill,
looking down Littondale**

Acrylic on board

25.5 x 25.5cm, £700



Note from the artist

My work in this exhibition is an exploration of the landscape near my home in Malhamdale. Whether the limestone features, or its surrounding moors and farmland, this is the place I live and am immersed in.

Boss Moor, with its sandy tracks and walls of millstone grit is a particular favourite. It is now 28 years since I first worked there and over many seasons I am slowly coming to know this place. I also make annual painting trips to the Highlands and Islands of Scotland.

Many of the places I like to work are quite exposed. My paintings are made up of lots moments in time and track the ever changing weather and light.

In my studio, I make larger paintings mostly in oil or acrylic on canvas. As I work, the painting takes on a life of its own, evolving into an object with its own unique character. Using rags, brushes and palette knives the painting emerges as I build layers and glazes, scraping into the painting I work and rework. It may be set aside for some time until the moment is right to engage with it again. I am trying to find equivalents

in paint for the different elements of the landscape. Occasionally I take the larger oil or acrylic paintings started in the studio back outside to the places that inspired them, allowing the painting to evolve further in response to the environment.

Working with landscapes I have been part of since childhood, I am interested in the traces of human presence. It may be the stonewalls, well-worn tracks, green lanes, roads or the play of light on a metal farm roof, these details become part of the narrative.

Central to my practice is drawing and mark making. I like the simplicity of working out in the landscape with ink, a few brushes, a pen, or maybe a stick I've picked up to use as a drawing tool.

Katharine Holmes, 2023

An unabridged version of this statement, together with more information about Katherine, is available on the Watermark Gallery website.





Katherine Helmer

**Clouds blowing over the Moor,
looking towards Winterburn**

Acrylic on board
25.5 x 25.5cm, £700



**Late Summer on Fleets Lane,
waiting for the blackberries
to ripen**

Acrylic on board
30 x 30cm, £900



Early in the year on Boss Moor

Acrylic on board
40 x 40cm, £1200



**Heat haze on Boss Moor,
looking towards Rylstone Fell,**
Watercolour, acrylic, ink, pastel
and collage on paper
42 x 51.5cm, £1200



Windy weather at Malham Tarn

Acrylic ink and pastel on
handmade paper
26 x 25cm, £400



Above Lainger Farm, a hazy day in late Summer looking towards Flasby and Winterburn

Watercolour, acrylic, pastel and collage on paper
56.5 x 76cm, £2200



A late Summer evening on Boss Moor

Acrylic and collage on canvas

80 x 100cm, £4,500



In the long grass, Summer

Ink, acrylic, watercolour and pastel on paper,
38 x 56.5cm, £1200



**Blue sky at Malham Cove,
Winter is past**

Oil on canvas

150 x 120cm, £8500



**Rainy days on the shore of Loch Kishorn,
looking towards Skye**
Watercolour, acrylic, ink, pastel and collage on paper
38 x 56cm, £1200



It feels like Summer, Malham Cove

Oil on canvas

41 x 51cm, £2000



Limestone waterfall in spate, Gordale,
Oil on canvas
100 x 120cm, £6500



Cool Summer days on the Moor

Watercolour, acrylic, ink, pastel
on paper

38 x 56.5cm, £2200



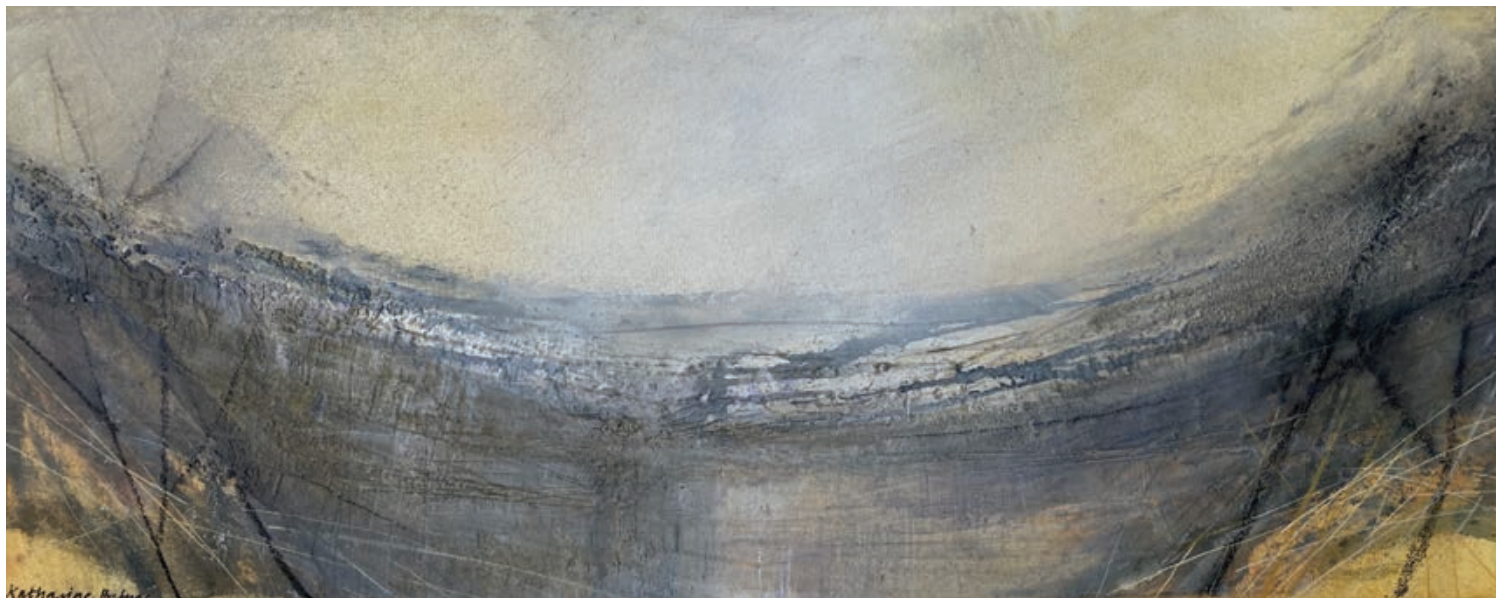
Farmland and Fell
Acrylic on board
40 x 50cm, £2000



High Summer in Littondale

Watercolour, acrylic, ink, pastel and collage
on paper

56.5 x 76cm, £2200



Mist and Limestone, Malham Cove

Acrylic on canvas
20 x 50cm, £1000



Paintings are for sale from receipt of this catalogue.

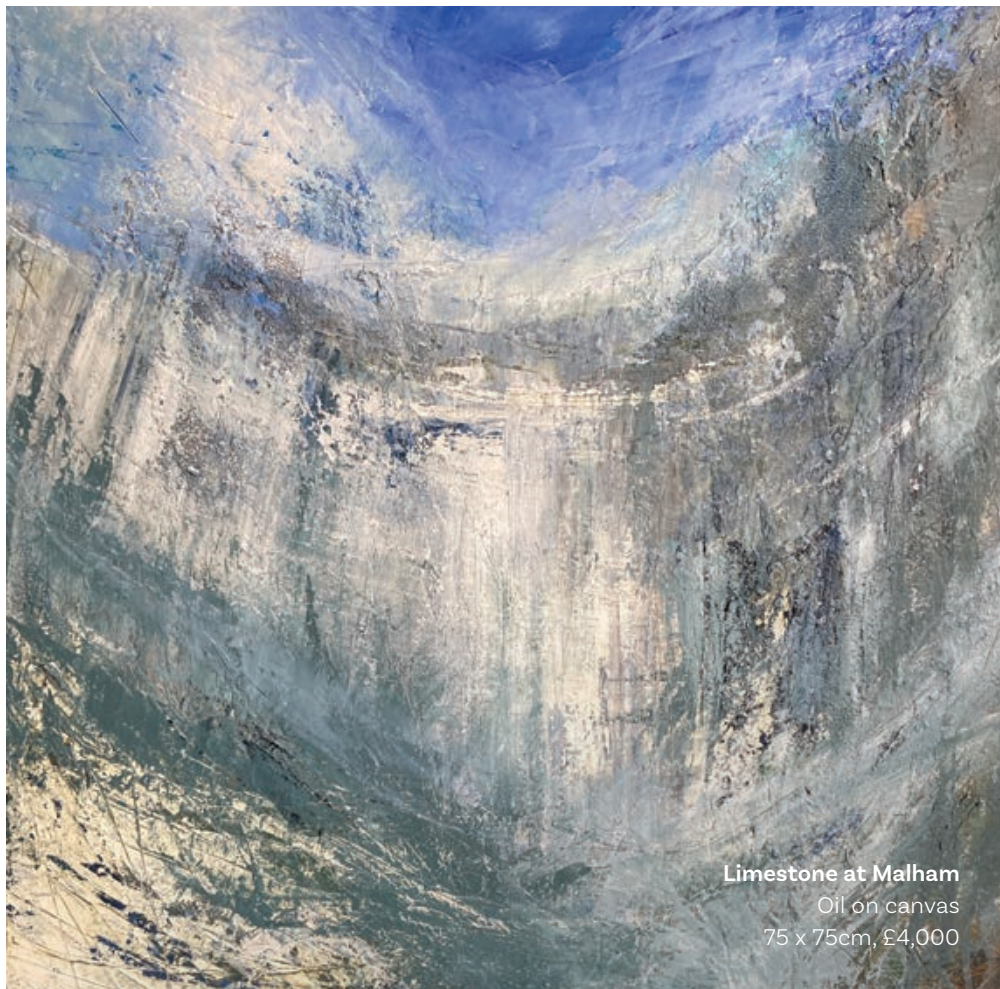
All sales enquiries to info@watermarkgallery.co.uk.
Exhibition also available online at watermarkgallery.co.uk

Watermark Gallery is a two minute walk down the hill from the previous Walker Galleries premises. It is opposite the entrance to The Royal Pump Room Museum and is fully accessible. Parking is available outside.

Opening times:
Tues to Sat 10 - 5pm

Exhibition venue:
Watermark Gallery
8 Royal Parade
Harrogate
HG1 2SZ
+44 (0) 1423 562659
watermarkgallery.co.uk

Design: Eureka!



Limestone at Malham

Oil on canvas
75 x 75cm, £4,000